

CARE OF SLEEVES AND ADAPTERS

In order to utilize sleeves and adapters in the most efficient way and to increase their life time, you should follow the following easy recommendations during all working phases.

Air pressure

- The air pressure measured at the air cylinder should be between 6 and 8 bar (87-116 psi).
- The air volume should not be below 12 litres per second (0.42 cubic ft/sec.).
- Please ensure air can pass freely without obstructions.
- Unnecessarily long or branching supply lines may lead to a drastic fall in air pressure.
- The compressed air system and the air cylinder surfaces should not be wet or dirty of oils, lubricants and inks.
- Check for blockages in the air outlet from time to time.

Cleaning, care and storage of sleeves and adapters

Lubricants, ink and tape residues should be removed as quickly as possible to maintain unaltered the surface properties as long as possible.

- The only suitable solvents for cleaning are ethanol, propanol and isopropanol.
- Stronger residues can be removed with a soft nylon brush.
- Do not use solvents containing grease or oil since they negatively affect the surface.
- Do not keep solvents on sleeves/adapters for a long period of time.
- Plates and tape should always be demounted after use so that solvents do not damage the sleeves.
- After cleaning, leave the sleeves/adapters to dry for about 30 minutes to allow the complete evaporation of solvents.
- Never use: acids, alkaline solutions, salt solutions and sharp objects that could damage the sleeves/adapters surface.
- To keep unaltered good mounting properties, the inner base of the sleeves should be cleaned with an appropriate cleaner.
- Fibre-glass filaments which could loosen from the inner base of the sleeve can be grinded off, but never pulled out.
- Sleeves/adapters should be stored freely and should not be stacked on top of each other or in contact with weights which may affect their concentricity.
- Please ensure that sleeves/adapters stored upright do not topple over.
- High temperatures and humidity negatively affect the service life of sleeves/adapters.

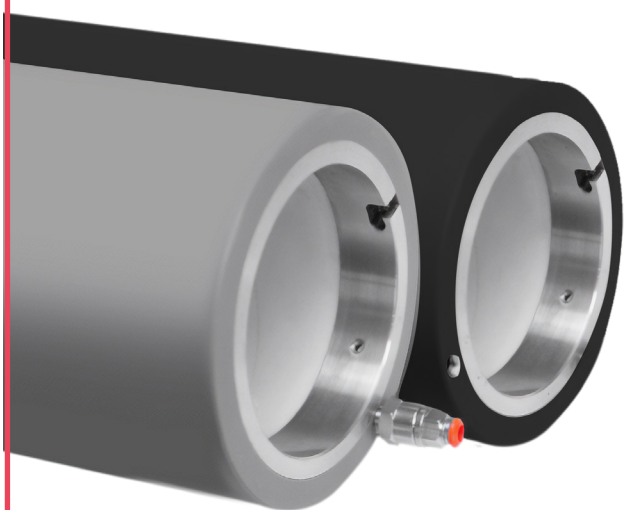
Clichés mounting

- Lubricant, oil and ink reduce the adhesion properties of the tape.
- To apply the tape on the sleeve without bubbles the use of a plastic rake and of a plastic roller is recommended
- PVC/PE adhesive tapes effectively protect the exposed surface of the sleeve.
- If an edge sealer is used, never apply it directly on the sleeve, but only on the tape!
- Cutting directly on the sleeve might damage the surface.
- In order to avoid the edge lifting of the plate, adjust the tape gap and the plate gap by a minimum of 30°.

Clichés demounting

- Remove cliché carefully, slowly and with constant tension in order to avoid cliché damaging.
- Remove the tape by slowly pulling it back from the corner at an angle.
- Remove any tape residue immediately.





AIS: With independent air channel, quick 3/8" attachment and stainless steel ring with built-in registration slot

AIS PLUS: With independent air channel, quick 3/8" attachment, stainless steel ring with built-in registration slot and internal air channel for easier sleeve change. All types of bridges can be conductive or non-conductive.



Other technical notes:

- Concentricity (TIR) $\geq 0,025$ mm
- Length tolerance according to DIN ISO 2768T1c



TECHNICAL SPECIFICATIONS **BRIDGE AIS PLUS**

| | | | | | | | | |
|----------|--------------|------------------|---------------------------------|---------------------|---------------------|-------------|-----------------|-----------------------|
| | | | | | | | | |
| Rigidity | Conductivity | Surface hardness | Resistance to external solvents | Mechanical strength | Moisture resistance | HD Printing | Side protection | Steel ring protection |
| | | | | | | | | |

The content of this document does not constitute a warranty from Tamburini S.r.l., particularly with regard to the suitability of the products represented for specific purposes; therefore, the customer is invited to verify beforehand that the product has the suitable characteristics for the intended use. Tamburini S.r.l. reserves the right to update this publication and periodically make changes to its content, including technical and/or commercial changes, without giving notice of revision or modification. This document, its logos, trademarks, specifications, etc. are protected by copyright laws with all rights reserved.





Anilox rolls require special care during storage, handling, and assembly. Tamburini has developed a special, extremely lightweight and manageable fiberglass and epoxy resin cover to protect Anilox rolls stored in the warehouse from impacts and dust. Its structure allows for easy positioning without the use of air or other mechanical tools and allows the Anilox to be mounted on the machine complete with its protection, which will only be removed when the Anilox is in the printing position, thus preventing any impact damage during assembly.

We produce all of our protective covers based on the individual dimensions of your Anilox rolls.

Other technical notes:

- Concentricity (TIR) $\geq 0,025$ mm
- Length tolerance according to DIN ISO 2768T1c

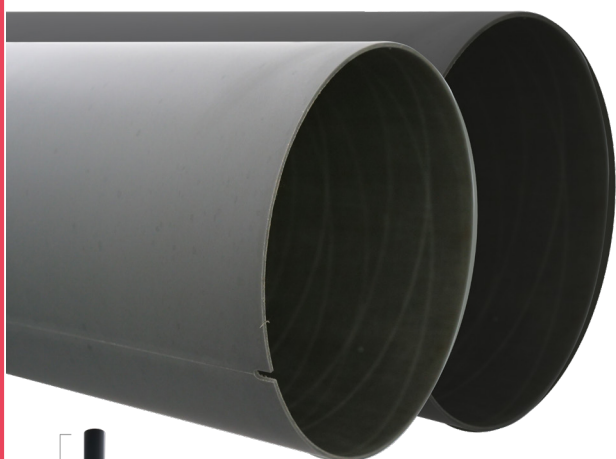


TECHNICAL SPECIFICATIONS **PROTEZIONE ANILOX**

| | | | | | | | | |
|----------|--------------|------------------|---------------------------------|---------------------|---------------------|-------------|-----------------|-----------------------|
| | | | | | | | | |
| Rigidity | Conductivity | Surface hardness | Resistance to external solvents | Mechanical strength | Moisture resistance | HD Printing | Side protection | Steel ring protection |
| | | | | | | | | |

The content of this document does not constitute a warranty from Tamburini S.r.l., particularly with regard to the suitability of the products represented for specific purposes; therefore, the customer is invited to verify beforehand that the product has the suitable characteristics for the intended use. Tamburini S.r.l. reserves the right to update this publication and periodically make changes to its content, including technical and/or commercial changes, without giving notice of revision or modification. This document, its logos, trademarks, specifications, etc. are protected by copyright laws with all rights reserved.





It is a lightweight but sturdy sleeve for mounting cliché with self-adhesive tapes.

The BIG SLEEVE has a Polyurethane surface that gives it high resistance and therefore a long lifespan, ensures easy detachment of the adhesive, and makes it lightweight and easy to transport.

Available in the following sizes:

- Length up to 3150mm
- Diameter up to 590mm
- Thicknesses from 1 to 260mm.

It can also be made in an antistatic version.

Other technical notes:

- Concentricity (TIR) $\geq 0,025$ mm
- Length tolerance according to DIN ISO 2768T1c



TECHNICAL SPECIFICATIONS **BIG SLEEVE**

| | | | | | | | | |
|----------|--------------|------------------|---------------------------------|---------------------|---------------------|-------------|-----------------|-----------------------|
| | | | | | | | | |
| Rigidity | Conductivity | Surface hardness | Resistance to external solvents | Mechanical strength | Moisture resistance | HD Printing | Side protection | Steel ring protection |
| | | | | | | | | |

The content of this document does not constitute a warranty from Tamburini S.r.l., particularly with regard to the suitability of the products represented for specific purposes; therefore, the customer is invited to verify beforehand that the product has the suitable characteristics for the intended use. Tamburini S.r.l. reserves the right to update this publication and periodically make changes to its content, including technical and/or commercial changes, without giving notice of revision or modification. This document, its logos, trademarks, specifications, etc. are protected by copyright laws with all rights reserved.





EleFlex is a sleeve of Stork sizes with seamless photopolymer for continuous printing. EleFlex offers high resolution for both line and halftone printing thanks to its uniform thickness that allows perfect ink transfer.

This also ensures extremely high precision in print registration.

Other technical notes:

- Concentricity (TIR) $\geq 0,025$ mm
- Length tolerance according to DIN ISO 2768T1c



TECHNICAL SPECIFICATIONS **ELEFLEX**

| | | | | | | | | |
|----------|--------------|------------------|---------------------------------|---------------------|---------------------|-------------|-----------------|-----------------------|
| | | | | | | | | |
| Rigidity | Conductivity | Surface hardness | Resistance to external solvents | Mechanical strength | Moisture resistance | HD Printing | Side protection | Steel ring protection |
| | | | | | | | | |

The content of this document does not constitute a warranty from Tamburini S.r.l., particularly with regard to the suitability of the products represented for specific purposes; therefore, the customer is invited to verify beforehand that the product has the suitable characteristics for the intended use. Tamburini S.r.l. reserves the right to update this publication and periodically make changes to its content, including technical and/or commercial changes, without giving notice of revision or modification. This document, its logos, trademarks, specifications, etc. are protected by copyright laws with all rights reserved.





The Da Vinci Sleeve Offset Plate, made of aluminum and steel, ensures the highest dimensional stability for roto offset machines.

All repetitions are available from 15" to 30" (381 mm - 762 mm) and from 23.75" to 45" (603 mm - 1143 mm).

Special dimensions are available upon request.

Other technical notes:

- Concentricity (TIR) $\geq 0,025$ mm
- Length tolerance according to DIN ISO 2768T1c

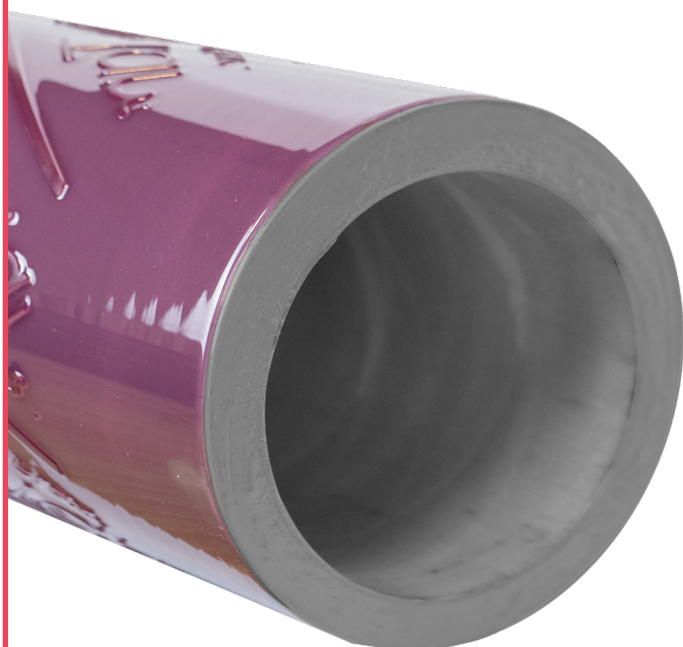
TECHNICAL SPECIFICATIONS OFFSET PLATE

| | | | |
|------------------|---------------------|---------------------|-----------------------|
| | | | |
| Surface hardness | Mechanical strength | Moisture resistance | Steel ring protection |
| | | | |



The content of this document does not constitute a warranty from Tamburini S.r.l., particularly with regard to the suitability of the products represented for specific purposes; therefore, the customer is invited to verify beforehand that the product has the suitable characteristics for the intended use. Tamburini S.r.l. reserves the right to update this publication and periodically make changes to its content, including technical and/or commercial changes, without giving notice of revision or modification. This document, its logos, trademarks, specifications, etc. are protected by copyright laws with all rights reserved.





COMBI Sleeve is the result of combining an Hq Speed sleeve with the seamless fusion of a special photopolymer. This type of sleeve is used for continuous printing. It ensures excellent print results even on finer screens and allows for savings on the purchase of adapter carriers.

N.B.: See Loreflex card for the possible coating.

Other technical notes:

- Concentricity (TIR) $\geq 0,025$ mm
- Length tolerance according to DIN ISO 2768T1c

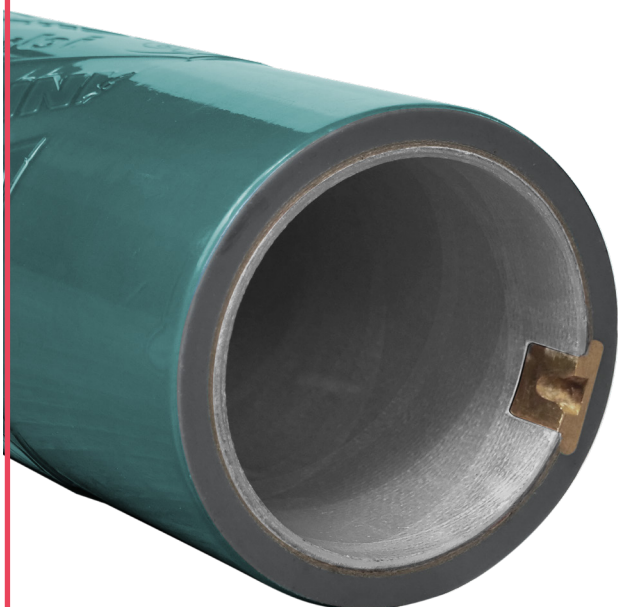


TECHNICAL SPECIFICATIONS **COMBI SLEEVE**

| | | | | | | | | |
|----------|--------------|------------------|---------------------------------|---------------------|---------------------|-------------|-----------------|-----------------------|
| | | | | | | | | |
| Rigidity | Conductivity | Surface hardness | Resistance to external solvents | Mechanical strength | Moisture resistance | HD Printing | Side protection | Steel ring protection |
| | | | | | | | | |

The content of this document does not constitute a warranty from Tamburini S.r.l., particularly with regard to the suitability of the products represented for specific purposes; therefore, the customer is invited to verify beforehand that the product has the suitable characteristics for the intended use. Tamburini S.r.l. reserves the right to update this publication and periodically make changes to its content, including technical and/or commercial changes, without giving notice of revision or modification. This document, its logos, trademarks, specifications, etc. are protected by copyright laws with all rights reserved.





LORE FLEX is a system that allows the Combi sleeve to be reused multiple times, quickly amortizing the cost of the sleeve.

Loreflex allows a new polymer to be fused and engraved on the existing Combi sleeve.

Other technical notes:

- Concentricity (TIR) $\geq 0,025$ mm
- Length tolerance according to DIN ISO 2768T1c

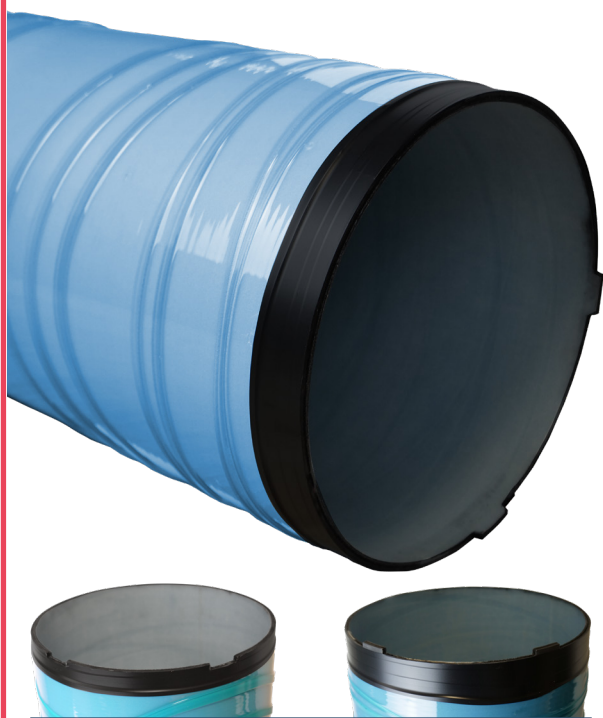


TECHNICAL SPECIFICATIONS LOREFLEX

| | | | | | | | | |
|----------|--------------|------------------|---------------------------------|---------------------|---------------------|-------------|-----------------|-----------------------|
| | | | | | | | | |
| Rigidity | Conductivity | Surface hardness | Resistance to external solvents | Mechanical strength | Moisture resistance | HD Printing | Side protection | Steel ring protection |
| | | | | | | | | |

The content of this document does not constitute a warranty from Tamburini S.r.l., particularly with regard to the suitability of the products represented for specific purposes; therefore, the customer is invited to verify beforehand that the product has the suitable characteristics for the intended use. Tamburini S.r.l. reserves the right to update this publication and periodically make changes to its content, including technical and/or commercial changes, without giving notice of revision or modification. This document, its logos, trademarks, specifications, etc. are protected by copyright laws with all rights reserved.





EASY BLOCK Sleeve, an exclusive patent of Tamburini S.r.l., is the optimal solution for large format printing.

Easy Block, by attaching 2 or more semi-sleeves, guarantees the highest quality of register on the entire required board.

With EASY BLOCK, it is also possible to obtain continuous prints without attachments on the print development. It is also available in an antistatic version.

Other technical notes:

- Concentricity (TIR) $\geq 0,025$ mm
- Length tolerance according to DIN ISO 2768T1c

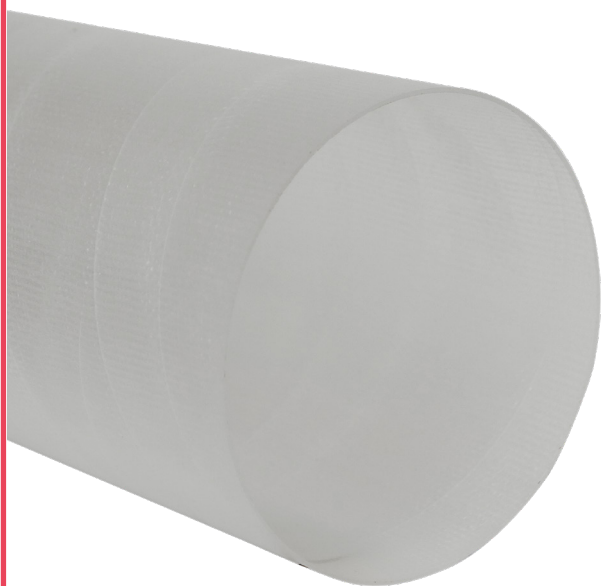


TECHNICAL SPECIFICATIONS EASYBLOCK SLEEVE

| | | | | | | | | |
|----------|--------------|------------------|---------------------------------|---------------------|---------------------|-------------|-----------------|-----------------------|
| | | | | | | | | |
| Rigidity | Conductivity | Surface hardness | Resistance to external solvents | Mechanical strength | Moisture resistance | HD Printing | Side protection | Steel ring protection |
| ✓ | ✓ | ✓ | ✗ | ✓ | ✓ | ✓ | ✗ | ✗ |

The content of this document does not constitute a warranty from Tamburini S.r.l., particularly with regard to the suitability of the products represented for specific purposes; therefore, the customer is invited to verify beforehand that the product has the suitable characteristics for the intended use. Tamburini S.r.l. reserves the right to update this publication and periodically make changes to its content, including technical and/or commercial changes, without giving notice of revision or modification. This document, its logos, trademarks, specifications, etc. are protected by copyright laws with all rights reserved.





SPEEDY Sleeve is a lightweight sleeve made of fiberglass and epoxy resin, suitable for multiple types of coating. Available in thicknesses from 0.8 mm to 1.4 mm, Speedy adapts to all types of double-sided tape and ensures excellent adhesion to the material.

Its surface made of fiberglass and epoxy resin also gives it great resistance to stress (glass fiber reinforced with epoxy resin reaches mechanical characteristics, for the same weight, 2.5 times higher than polyester glass fiber) and heat (does not vulcanize at temperatures up to 120° C) allowing for a long service life.

Other technical notes:

- Concentricity (TIR) $\geq 0,025$ mm
- Length tolerance according to DIN ISO 2768T1c

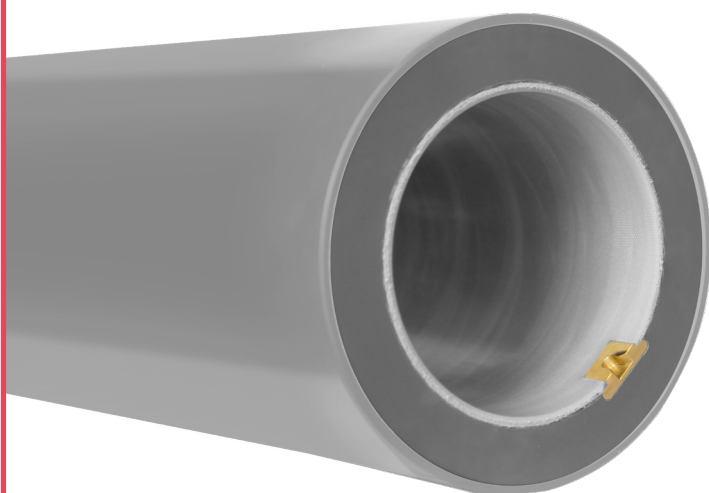


TECHNICAL SPECIFICATIONS **SPEEDY SLEEVE**

| | | | | | | | | |
|----------|--------------|------------------|---------------------------------|---------------------|---------------------|-------------|-----------------|-----------------------|
| | | | | | | | | |
| Rigidity | Conductivity | Surface hardness | Resistance to external solvents | Mechanical strength | Moisture resistance | HD Printing | Side protection | Steel ring protection |
| | | | | | | | | |

The content of this document does not constitute a warranty from Tamburini S.r.l., particularly with regard to the suitability of the products represented for specific purposes; therefore, the customer is invited to verify beforehand that the product has the suitable characteristics for the intended use. Tamburini S.r.l. reserves the right to update this publication and periodically make changes to its content, including technical and/or commercial changes, without giving notice of revision or modification. This document, its logos, trademarks, specifications, etc. are protected by copyright laws with all rights reserved.





HQ Speed is a multi-layer sleeve with an outer surface made of polyurethane. The various layers have been designed to make the sleeve durable, manageable, resistant, and extremely precise and reliable. Its polyurethane surface gives it an external hardness that allows easy and fast printing of any type of plant, even HD.

Also available in antistatic version*.

* See DA VINCI SLEEVE HQ Speed conductive sheet.

Other technical notes:

- Concentricity (TIR) $\geq 0,025$ mm
- Length tolerance according to DIN ISO 2768T1c

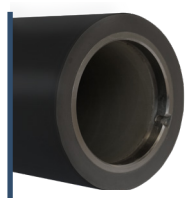


TECHNICAL SPECIFICATIONS HQ SPEED

| | | | | | | | | |
|----------|--------------|------------------|---------------------------------|---------------------|---------------------|-------------|-----------------|-----------------------|
| | | | | | | | | |
| Rigidity | Conductivity | Surface hardness | Resistance to external solvents | Mechanical strength | Moisture resistance | HD Printing | Side protection | Steel ring protection |
| | | | | | | | | |

The content of this document does not constitute a warranty from Tamburini S.r.l., particularly with regard to the suitability of the products represented for specific purposes; therefore, the customer is invited to verify beforehand that the product has the suitable characteristics for the intended use. Tamburini S.r.l. reserves the right to update this publication and periodically make changes to its content, including technical and/or commercial changes, without giving notice of revision or modification. This document, its logos, trademarks, specifications, etc. are protected by copyright laws with all rights reserved.





HQ Speed Conductive is a multi-layered sleeve with an external surface made of epoxy resin and anti-static carbon. The various layers have been designed to make the sleeve durable, manageable, resistant, and extremely precise and reliable. Its surface gives it an external hardness that allows easy and fast printing on any type of system, even in HD. The product complies with Atex regulations.

HQ Speed conductive is available in any diameter and length also in standard version*.

*See DA VINCI SLEEVE HQ Speed sheet.

Other technical notes:

- Concentricity (TIR) $\geq 0,025$ mm
- Length tolerance according to DIN ISO 2768T1c

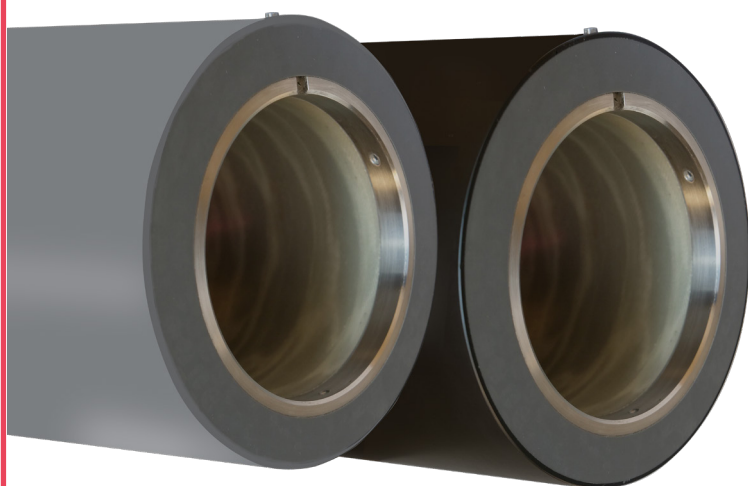


TECHNICAL SPECIFICATIONS HQ SPEED CONDUTTIVA

| | | | | | | | | |
|----------|--------------|------------------|---------------------------------|---------------------|---------------------|-------------|-----------------|-----------------------|
| | | | | | | | | |
| Rigidity | Conductivity | Surface hardness | Resistance to external solvents | Mechanical strength | Moisture resistance | HD Printing | Side protection | Steel ring protection |
| | | | | | | | | |

The content of this document does not constitute a warranty from Tamburini S.r.l., particularly with regard to the suitability of the products represented for specific purposes; therefore, the customer is invited to verify beforehand that the product has the suitable characteristics for the intended use. Tamburini S.r.l. reserves the right to update this publication and periodically make changes to its content, including technical and/or commercial changes, without giving notice of revision or modification. This document, its logos, trademarks, specifications, etc. are protected by copyright laws with all rights reserved.





BRIDGE Sleeve is a pneumatic adapter made with the same construction as the HQ SPEED and HQ SPEED ANTISTATIC sleeves.

It can be combined with all types of sleeves, reducing the thickness, cost, and weight of the plate carrier sleeve. Also available in AIS and AIS Plus versions.

Other technical notes:

- Concentricity (TIR) $\geq 0,025$ mm
- Length tolerance according to DIN ISO 2768T1c



TECHNICAL SPECIFICATIONS **BRIDGE SLEEVE**

| | | | | | | | | |
|----------|--------------|------------------|---------------------------------|---------------------|---------------------|-------------|-----------------|-----------------------|
| | | | | | | | | |
| Rigidity | Conductivity | Surface hardness | Resistance to external solvents | Mechanical strength | Moisture resistance | HD Printing | Side protection | Steel ring protection |
| | | | | | | | | |

The content of this document does not constitute a warranty from Tamburini S.r.l., particularly with regard to the suitability of the products represented for specific purposes; therefore, the customer is invited to verify beforehand that the product has the suitable characteristics for the intended use. Tamburini S.r.l. reserves the right to update this publication and periodically make changes to its content, including technical and/or commercial changes, without giving notice of revision or modification. This document, its logos, trademarks, specifications, etc. are protected by copyright laws with all rights reserved.





ELASTX is the laser-engraved elastomer sleeve that allows the use of inks with high solvent percentages.

The elastomer is a material that is resistant to both UV rays and ozone. It is also available in a full colour version (Rubber Sleeve)

Other technical notes:

- Concentricity (TIR) $\geq 0,025$ mm
- Length tolerance according to DIN ISO 2768T1c

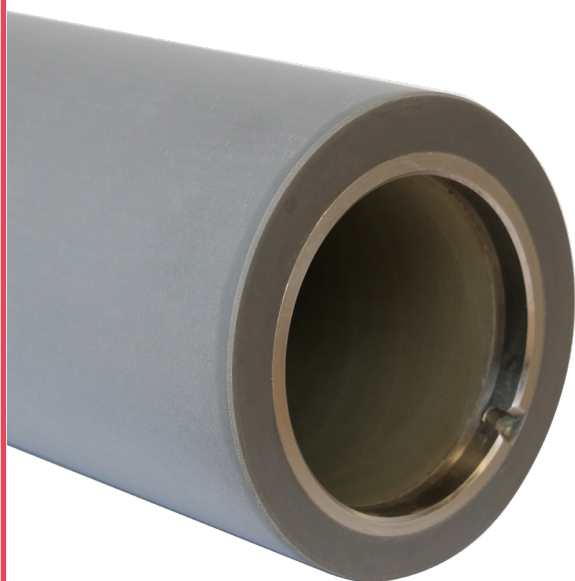
TECHNICAL SPECIFICATIONS **ELASTX**

| | | |
|---------------------------------|---------------------|---------------------|
| | | |
| Resistance to external solvents | Mechanical strength | Moisture resistance |
| | | |



The content of this document does not constitute a warranty from Tamburini S.r.l., particularly with regard to the suitability of the products represented for specific purposes; therefore, the customer is invited to verify beforehand that the product has the suitable characteristics for the intended use. Tamburini S.r.l. reserves the right to update this publication and periodically make changes to its content, including technical and/or commercial changes, without giving notice of revision or modification. This document, its logos, trademarks, specifications, etc. are protected by copyright laws with all rights reserved.





BLANKET is a multi-layered sleeve with an outer surface made of polyurethane. The various layers of which it is composed have been designed to make the sleeve durable, manageable, resistant and extremely precise and reliable.

Its polyurethane surface gives it an external hardness that allows for easy and fast printing of any type of plant, even in HD.

Other technical notes:

- Concentricity (TIR) $\geq 0,025$ mm
- Length tolerance according to DIN ISO 2768T1c

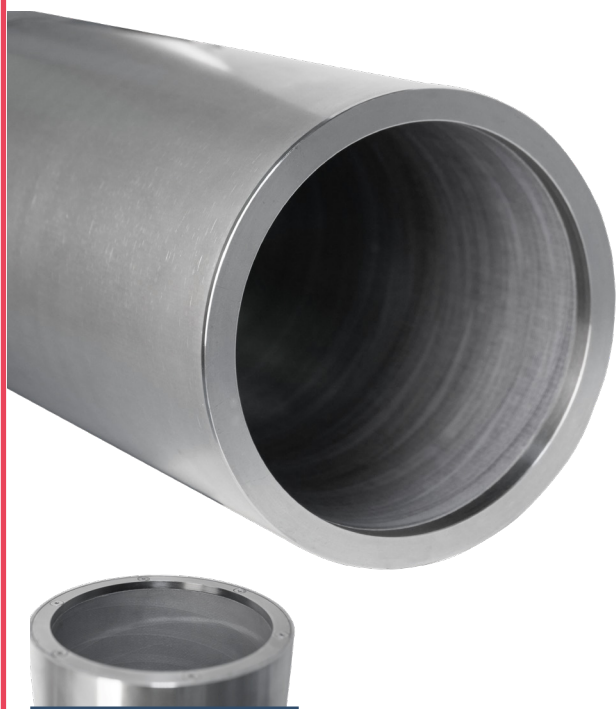


TECHNICAL SPECIFICATIONS **OFFSET BLANKET**

| | | | | | | | | |
|----------|--------------|------------------|---------------------------------|---------------------|---------------------|-------------|-----------------|-----------------------|
| | | | | | | | | |
| Rigidity | Conductivity | Surface hardness | Resistance to external solvents | Mechanical strength | Moisture resistance | HD Printing | Side protection | Steel ring protection |
| | | | | | | | | |

The content of this document does not constitute a warranty from Tamburini S.r.l., particularly with regard to the suitability of the products represented for specific purposes; therefore, the customer is invited to verify beforehand that the product has the suitable characteristics for the intended use. Tamburini S.r.l. reserves the right to update this publication and periodically make changes to its content, including technical and/or commercial changes, without giving notice of revision or modification. This document, its logos, trademarks, specifications, etc. are protected by copyright laws with all rights reserved.





Supplied to Anilox producers, Tamburini has developed a special sleeve designed to ensure dimensional stability to the final ceramic coating and engraving process carried out by our clients.

The outer surface of the aluminum tube is finished with high-speed and high-precision turning to achieve perfect uniformity and a roughness value suitable for plasma coating (or similar) deposition of the ceramic layer.

Other technical notes:

- Concentricity (TIR) $\geq 0,025$ mm
- Length tolerance according to DIN ISO 2768T1c

TECHNICAL SPECIFICATIONS **ANILOX SLEEVE**

| | | | |
|------------------|---------------------|---------------------|-----------------------|
| | | | |
| Surface hardness | Mechanical strength | Moisture resistance | Steel ring protection |
| | | | |



The content of this document does not constitute a warranty from Tamburini S.r.l., particularly with regard to the suitability of the products represented for specific purposes; therefore, the customer is invited to verify beforehand that the product has the suitable characteristics for the intended use. Tamburini S.r.l. reserves the right to update this publication and periodically make changes to its content, including technical and/or commercial changes, without giving notice of revision or modification. This document, its logos, trademarks, specifications, etc. are protected by copyright laws with all rights reserved.





Rubber sleeve ideal for full colour printing with high solvent ink.

Other technical notes:

- Concentricity (TIR) $\geq 0,025$ mm
- Length tolerance according to DIN ISO 2768T1c

TECHNICAL SPECIFICATIONS RUBBER

| | | |
|---------------------------------|---------------------|---------------------|
| | | |
| Resistance to external solvents | Mechanical strength | Moisture resistance |
| | | |



The content of this document does not constitute a warranty from Tamburini S.r.l., particularly with regard to the suitability of the products represented for specific purposes; therefore, the customer is invited to verify beforehand that the product has the suitable characteristics for the intended use. Tamburini S.r.l. reserves the right to update this publication and periodically make changes to its content, including technical and/or commercial changes, without giving notice of revision or modification. This document, its logos, trademarks, specifications, etc. are protected by copyright laws with all rights reserved.



STANDARD STORK: LIST OF AVAILABLE DIMENSIONS

| Stork Type | Ø Diameter in mm | Stork Type | Ø Diameter in mm | Stork Type | Ø Diameter in mm | Stork Type | Ø Diameter in mm |
|------------|------------------|------------|------------------|------------|------------------|------------|------------------|
| 0170 | 047.863 | 0550 | 168.820 | 0900 | 279.979 | 1260 | 394.570 |
| 0200 | 057.412 | 0560 | 172.004 | 0910 | 283.162 | 1270 | 397.754 |
| 0210 | 060.595 | 0570 | 175.187 | 0920 | 286.345 | 1280 | 400.937 |
| 0220 | 063.778 | 0580 | 178.370 | 0930 | 289.528 | 1290 | 404.120 |
| 0230 | 066.961 | 0590 | 181.553 | 0940 | 292.711 | 1300 | 407.303 |
| 0240 | 070.144 | 0600 | 184.736 | 0950 | 295.894 | 1310 | 410.486 |
| 0250 | 073.327 | 0610 | 187.919 | 0960 | 299.077 | 1320 | 413.669 |
| 0260 | 076.511 | 0620 | 191.102 | 0970 | 320.261 | 1330 | 416.852 |
| 0270 | 079.694 | 0630 | 194.285 | 0980 | 305.444 | 1340 | 420.035 |
| 0280 | 082.877 | 0640 | 197.468 | 0990 | 308.627 | 1350 | 423.218 |
| 0290 | 086.060 | 0650 | 200.651 | 1000 | 311.810 | 1360 | 426.401 |
| 0300 | 089.243 | 0660 | 203.835 | 1010 | 314.993 | 1370 | 429.585 |
| 0310 | 092.426 | 0670 | 207.018 | 1020 | 318.176 | 1380 | 432.769 |
| 0320 | 095.609 | 0680 | 210.201 | 1030 | 321.359 | 1390 | 435.951 |
| 0330 | 098.792 | 0690 | 213.384 | 1040 | 324.542 | 1400 | 439.134 |
| 0340 | 101.975 | 0700 | 216.567 | 1050 | 327.725 | 1410 | 442.317 |
| 0350 | 105.158 | 0710 | 219.750 | 1060 | 330.908 | 1420 | 445.500 |
| 0360 | 108.342 | 0720 | 222.933 | 1070 | 334.092 | 1430 | 448.683 |
| 0370 | 111.525 | 0730 | 226.116 | 1080 | 337.275 | 1440 | 451.866 |
| 0380 | 114.708 | 0740 | 299.299 | 1090 | 340.458 | 1450 | 455.049 |
| 0390 | 117.891 | 0750 | 232.482 | 1100 | 343.641 | 1460 | 458.232 |
| 0400 | 121.074 | 0760 | 235.666 | 1110 | 346.824 | 1470 | 461.416 |
| 0410 | 124.257 | 0770 | 238.849 | 1120 | 350.007 | 1480 | 464.599 |
| 0420 | 127.440 | 0780 | 242.032 | 1130 | 353.190 | 1490 | 467.782 |
| 0430 | 130.623 | 0790 | 245.215 | 1140 | 356.373 | 1500 | 470.965 |
| 0440 | 133.806 | 0800 | 248.398 | 1150 | 359.556 | 1510 | 474.148 |
| 0450 | 136.989 | 10810 | 251.331 | 1160 | 362.739 | 1520 | 477.331 |
| 0460 | 140.173 | 20810 | 251.581 | 1170 | 365.923 | 1530 | 480.514 |
| 0470 | 143.356 | 0820 | 254.514 | 1180 | 369.106 | 1540 | 483.697 |
| 0480 | 146.539 | 0830 | 257.697 | 1190 | 372.289 | 1550 | 486.880 |
| 0490 | 149.722 | 0840 | 260.880 | 1200 | 375.472 | 1560 | 490.063 |
| 0500 | 152.905 | 0850 | 264.063 | 1210 | 378.655 | 1570 | 493.247 |
| 0510 | 156.088 | 0860 | 267.247 | 1220 | 381.838 | 1580 | 496.430 |
| 0520 | 159.271 | 0870 | 270.430 | 1230 | 385.021 | 1590 | 499.613 |
| 0530 | 162.454 | 0880 | 273.613 | 1240 | 388.204 | 1780 | 560.092 |
| 0540 | 165.637 | 0890 | 276.796 | 1250 | 391.387 | | |

